

Build and protect your self-service, self-managed private cloud on demand



Data-first approach elevates data maturity and helps unleash the power to drive innovation and agility

Make managing hundreds of systems as simple as managing one

Governments around the world have identified data as a strategic resource to drive economic and social progress. Organizations in both the private and public sectors, in turn, strive to grow sales and advance environmental sustainability. The key enabler of these outcomes is a data-first approach that elevates data maturity and helps unleash the power of an organization's data to drive innovation and agility. But there are many challenges that organizations face in the digital transformation journey such as:

- Fragmented infrastructure complexity
- Manual processes within diverse environments across hybrid clouds
- Infrastructure silos spanning edge to cloud

Data-first approach elevates data maturity and helps unleash the power to drive innovation and agility

Data leaders are:

- 20x more likely to beat competitors to market by multiple quarters¹
- 2x more likely to recover faster from ransomware (within minutes)²
- 49% more innovative, driving more progress in the last year than nascent organizations³

On-premises cloud adoption is accelerating

Trends accelerating on-premises cloud adoption include:

- 92% of enterprises have adopted a multicloud strategy⁴
- 70% of applications are outside the public cloud⁵
- 82% of organizations are planning to shift toward consumption-driven, as-a-service solutions⁶

^{1, 2, 3} "Data Management Maturity Study," ESG, 2022

⁴ "Flexera 2021 State of the Cloud Report," Flexera, 2021

⁵ "IDC Cloud Pulse," 2022

⁶ "Future Enterprise Resiliency & Spending Survey," IDC, 2021

In addition, as organizations accelerate their adoption of on-premises cloud, the headwinds that IT administrators encounter are many, including:

- Acquiring multidomain experience
- Handling infrastructure complexity
- Firefighting constantly resulting from uncontrolled virtual machine (VM) sprawl
- Managing diverse environments spread across hybrid cloud
- Meeting the cost constraints of IT

The winning solution is a radically simplified experience for data infrastructure at scale across the lifecycle — from streamlined device deployment to VM provisioning to global VM and infrastructure management. In fact, if today's workloads run on a cloud-native data platform that scales with infrastructure, managing hundreds of systems across geographies would be as simple as managing one.

A cloud-native data platform that scales with infrastructure can offer:

- Intuitive artificial intelligence (AI)-driven cloud experience on-premises for simpler storage and data management
- Highly resilient, efficient infrastructure that is built for critical enterprise applications
- Seamlessly integrated hybrid cloud management and protection that eliminates point solutions

HPE solution

With HPE GreenLake edge-to-cloud platform, you gain a cloud operational experience for all your workloads, from edge to cloud.

The platform offers many cloud data services as part of the Data Services Cloud Console that can be combined to provide a comprehensive solution that not only simplifies infrastructure operations with cloud agility but also protects your data wherever it resides.

HPE GreenLake for Private Cloud Business Edition delivers VMs across hybrid cloud on demand, so you can build your self-service cloud when you need it and where you need it — in data centers, at the edge, and beyond. It helps eliminate complexity with a unified cloud service for VM to infrastructure management, including public cloud VMs.

By deploying a solution that offers unified management and monitoring of VMs and infrastructure deployed at any location as well as one-click, multisite upgrades, IT can reduce operating costs while optimizing resource utilization. The VM-based cloud offering brings the agility of cloud operations and the ease of cloud ownership to apps and data everywhere.

By subscribing to HPE GreenLake for Private Cloud Business Edition, you shift from traditional VM and infrastructure ownership to flexibly consume hybrid cloud VMs with predictable monthly costs.



HPE GreenLake for Backup and Recovery together with HPE GreenLake for Private Cloud Business Edition

By deploying another cloud data service, HPE GreenLake for Backup and Recovery, with HPE GreenLake for Private Cloud Business Edition, you not only provision your hybrid cloud VMs but also protect your mission-critical data — all within a single unified experience.

As shown in Figure 1, protection policies that have been defined in HPE GreenLake for Backup and Recovery can be included as part of an HPE GreenLake for Private Cloud Business Edition VM provisioning policy. This means that VMs provisioned through HPE GreenLake for Private Cloud Business Edition have data protection configured right from the start. Whether the policy calls for array snapshots, local on-premises backups, cloud backups in the HPE Cloud Protection Store, or any combination thereof, administrators can be confident that their VM workloads are being protected.

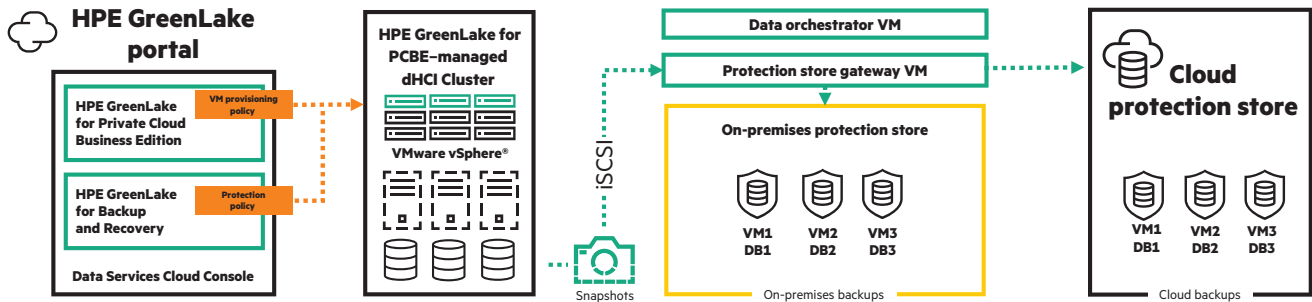


Figure 1. Integration of HPE GreenLake for Private Cloud Business Edition with HPE GreenLake for Backup and Recovery

Summary

The integration of HPE GreenLake for Private Cloud Business Edition and HPE GreenLake for Backup and Recovery enables you to:

- Seamlessly access both HPE GreenLake for Private Cloud Business Edition and HPE GreenLake for Backup and Recovery via a single unified portal

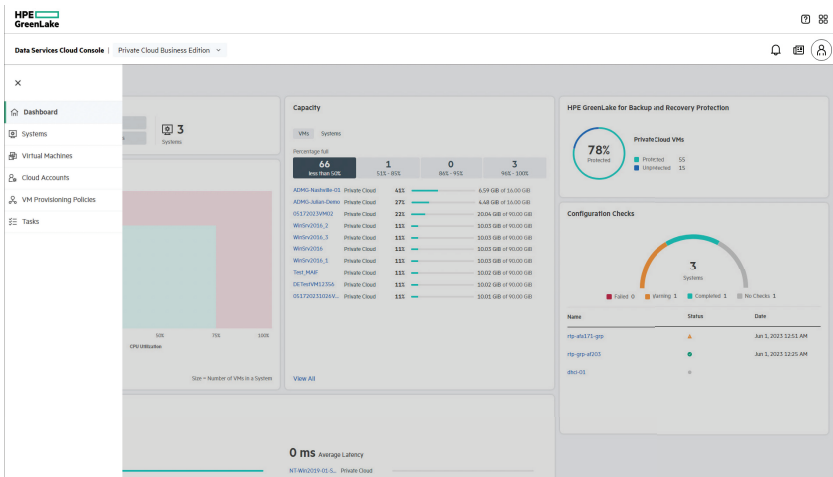


Figure 2. HPE GreenLake dashboard

- View the protection policies set through HPE GreenLake for Backup and Recovery from the HPE GreenLake Private Cloud Business Edition dashboard
- Embed a protection policy defined in HPE GreenLake for Backup and Recovery within a VM provisioning policy defined in HPE GreenLake for Private Cloud Business Edition so that any VM provisioned in HPE GreenLake for Private Cloud Business Edition will have appropriate protection configured
- View the status of VMs protected by HPE GreenLake for Backup and Recovery as well as unprotected VMs in an easy-to-use dashboard (as seen in Figure 2)

Learn more at

[HPE GreenLake for Private Cloud Business Edition](#)

[HPE GreenLake for Backup and Recovery](#)

Explore **HPE GreenLake**

Chat now (sales)

Hewlett Packard Enterprise

© Copyright 2023 Hewlett Packard Enterprise Development LP. The information contained herein is subject to change without notice. The only warranties for Hewlett Packard Enterprise products and services are set forth in the express warranty statements accompanying such products and services. Nothing herein should be construed as constituting an additional warranty. Hewlett Packard Enterprise shall not be liable for technical or editorial errors or omissions contained herein.

VMware vSphere is a registered trademark or trademark of VMware, Inc. and its subsidiaries in the United States and other jurisdictions. All third-party marks are property of their respective owners.

a00134589ENW
S-Rev. August 2024