

# Benefits of Upgrading to Cisco Catalyst 9000 Switches

How to Buy

Why upgrade to the Cisco Catalyst 9000 switching family?

## Reimagine, Reinforce, Redefine

The Cisco® Catalyst® 9000 family of switches are Cisco's lead fixed, modular and compact enterprise access, aggregation and core switching platform. They are built to transform your network to handle a hybrid world where the workplace is anywhere, endpoints could be anything, and applications are hosted all over the place.

The Catalyst 9000 family, including the new Catalyst 9000X models, continue to shape the future with ongoing innovation that helps you reimagine connections, reinforce security, and redefine the experience for your hybrid workforce big and small.



# Why upgrade to the Catalyst 9200 Series?

The Catalyst 9200 Series switches extend the power of intent-based networking and Catalyst 9000 hardware and software innovation to a broader set of deployments. The Catalyst 9200 Series focuses on offering right-sized switching for simple branch deployments. With its family pedigree, the Catalyst 9200 Series offers simplicity without compromise. It is secure and always on and provides a new level of IT simplicity.

Secure, simple, solid. That’s how we build them.

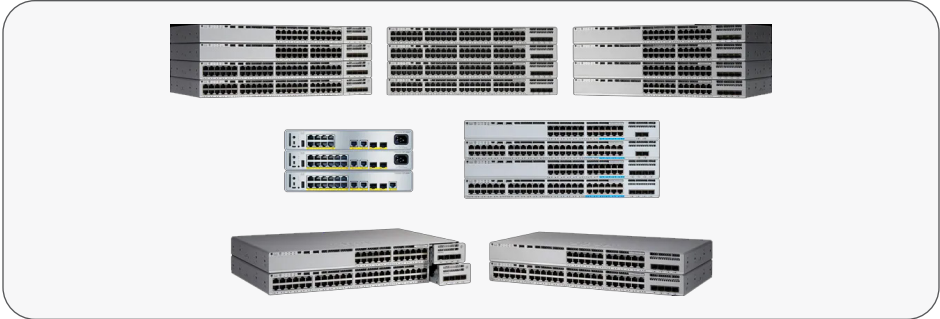


Figure 1. Catalyst 9200 Series

Table 1. Benefits of the Catalyst 9200 Series switches compared to other Catalyst access switches in their class

| Trend                 | Feature   | Legacy fixed access switches                  |                         | Catalyst 9200 Series   | Benefits   |
|-----------------------|---|---|-------------------------|------------------------|--|
|                       |   | Catalyst 2960-X Series                        | Catalyst 2960-XR Series |                        |  |
| Scale and performance | Bandwidth per stack                             | 80 Gbps                                       | 80 Gbps                 | Up to 160 Gbps         | Twice the density at nearly the same price.          |
|                       | Uplinks   | 4x1G SFP<br>2x10G SFP+<br>2x10/100/1000BASE-T | 4x1G SFP<br>2x10G SFP+  | 4x1G SFP<br>4x10G SFP+ |  |
| Advanced security     | Full Flexible NetFlow                           | ✓   | ✓                       | ✓                      | Orchestrate role-based access to corporate resources |
|                       | Cisco TrustSec® and SGT¹ for wired and wireless | ✓   | ✓                       | ✓                      | AES-128, MACsec-128                                  |
|                       | Trustworthy solutions                           | ✓   | ✓                       | ✓                      |  |
|                       | MACsec link encryption                          | -   | -                       | ✓                      |  |

| Trend                     | Feature                       | Legacy fixed access switches |                         | Catalyst 9200 Series | Benefits   |
|---------------------------|-------------------------------|------------------------------|-------------------------|----------------------|--|
|                           |                               | Catalyst 2960-X Series       | Catalyst 2960-XR Series |                      |  |
| Simplicity and automation | Cisco IOS® XE OS              | -                            | -                       | ✓                    | Single common network OS across switching, routing, wireless, and IoT. |
|                           | Simplified Campus Automation  | -                            | -                       | ✓                    | Optimized discovery and configuration of network devices               |
|                           | Model-driven programmability  | -                            | -                       | ✓                    | Standards-based programmable interfaces.                               |
|                           | Streaming telemetry           | -                            | -                       | ✓                    | Rich contextual insights.  |
|                           | SD-Access programmability     | -                            | -                       | ✓                    | Automation and Assurance   |
|                           | Cloud monitoring for Catalyst | -                            | -                       | ✓                    | Visibility on Meraki Dashboard   |

<sup>1</sup>SGT: Security Group Tag, SD-Access: Software-Defined Access

Table 2. Benefits of the Cisco Catalyst 9200CX models compared to other Cisco Catalyst compact access switches in the same class

| Trend                 | Feature  | Installed-base access switches         |                                      |   | Benefits   |
|-----------------------|--|--|--------------------------------------|---|--|
|                       |  | Cisco Catalyst Benefits 2960-CX Series | Cisco Catalyst 3560-CX Series        | Cisco Catalyst 9200CX models                      |  |
| Scale and performance | Ports  | 8, 12x 1Gbps PoE+, data options        | 8, 12 x 1Gbps PoE+, data options     | 8, 12x 1Gbps PoE+, 2x 10G mGig UPOE, data options | Twice the density at nearly the same price           |
|                       | Uplinks  | 2x 1G SFP + 2x 1G copper               | 2x 1G SFP, 2x 1G copper, 2x 10G SFP+ | 4x 10G SFP+ + 2x 1G copper                        |  |
| Advanced security     | Full Flexible NetFlow                          | X - NetFlow Lite                       | X - NetFlow Lite                     | ✓   | Orchestrate role-based access to corporate resources |
|                       | Cisco TrustSec® and SGT for wired and wireless | ✓                                      | ✓                                    | ✓   |  |
|                       | Trustworthy solutions                          | -                                      | -                                    | ✓   |  |
|                       | MACsec link encryption                         | -                                      | -                                    | ✓   | AES-256, MACsec-256                                  |

| Trend                     | Feature                      | Installed-base access switches         |                               |                              | Benefits  |
|---------------------------|------------------------------|--|-------------------------------|------------------------------|---|
|                           |                              | Cisco Catalyst Benefits 2960-CX Series | Cisco Catalyst 3560-CX Series | Cisco Catalyst 9200CX models |   |
| Simplicity and automation | Cisco IOS® XE                | -                                      | -                             | ✓                            | Single common network OS across switching, routing, wireless, and IoT |
|                           | Simplified Campus Automation | -                                      | -                             | ✓                            | Optimized discovery and configuration of network devices              |
|                           | Model-driven programmability | -                                      | -                             | ✓                            | Standards-based programmable interfaces                               |
|                           | Streaming telemetry          | -                                      | -                             | ✓                            | Rich contextual insights  |
|                           | SD-Access programmability    | Extended node only                     | Extended node only            | ✓                            | Automation and assurance  |
|                           | AC and HVDC power supplies   | -                                      | -                             | ✓                            | Ideal for smart buildings   |

<sup>1</sup>G: Gigabit Ethernet, SFP: Small Form-Factor Pluggable, SGT: Security Group Tag, SD-Access: Software-Defined Access

## Why upgrade to the Catalyst 9300 Series?

The Catalyst 9300 Series switches give your users a superior network and service experience with next-generation observability from switch to Software as a Service (SaaS) and everything in between. These switches offer a broad range of port and management options, providing operational choice of physical or virtual appliances with Cisco Catalyst Center, or by using Meraki cloud managed dashboard. The Catalyst 9300 Series includes advanced application hosting for solutions such as Cisco Spaces, giving you control and visibility inside the network, and Cisco ThousandEyes Enterprise Agents, giving you visibility beyond your campus

perimeter to help you solve issues faster. Offering up to 1 Tbps of mixed fiber and copper stacking capacity, multigigabit, and 90W UPOE+, the Catalyst 9300 Series offers options from large to small.



Figure 2. Catalyst 9300 Series

Table 3. Benefits of the Catalyst 9300 Series compared to other Catalyst access switches in their class

| Trend                 | Feature                              | Legacy fixed access switches   |                       |                                    | Catalyst 9300 and 9300X models  | Benefits   |
|-----------------------|--------------------------------------|--------------------------------|-----------------------|------------------------------------|---|--|
|                       |                                      | Catalyst 3560-X, 3750-X Series | Catalyst 3750G Series | Catalyst 3850 Series               |   |  |
| Scale and performance | Bandwidth per stack                  | No stacking/64 Gbps            | 32 Gbps               | 480 Gbps copper and fiber          | Up to 1 Tbps copper and fiber   | Greater throughput   |
|                       | Uplinks                              | 2x 10G <sup>1</sup>            | 4x 1G                 | 4x 1G, 2x 10G, 4x 10G (all models) | 2x, 4x dual-rate 100G/40G; 2x 40G; 2x, 8x multirate 25G, 10G, and 1G; 4x, 8x10G mGig; 4x 1G | Greater uplink scale to 100G                                 |
|                       | Cisco Multigigabit (mGig) technology | -                              | -                     | ✓                                  | ✓ (including uplinks)   | Supports speeds above 1G in traditional cabling environments |

| Trend             | Feature  | Legacy fixed access switches   |                       |                               | Catalyst 9300 and 9300X models | Benefits  |
|-------------------|--|--------------------------------|-----------------------|-------------------------------|--------------------------------|---|
|                   |  | Catalyst 3560-X, 3750-X Series | Catalyst 3750G Series | Catalyst 3850 Series          |                                |   |
| Advanced security | Native Flexible NetFlow                                    | -                              | -                     | ✓                             | ✓                              | Orchestrate role-based access to corporate resources.   |
|                   | Cisco TrustSec and SGT <sup>2</sup> for wired and wireless | Wired                          | -                     | ✓                             | ✓                              | AES-256, MACsec-256<br>WAN-MACsec   |
|                   | Trustworthy solutions                                      | -                              | -                     | ✓                             | ✓                              | Most secure link authentication and encryption  |
|                   | Native MACsec-256 encryption                               | -                              | -                     | Multigigabit, 10G models only | ✓                              | Detect malware hiding in encrypted traffic without decrypting it  |
|                   | Encrypted Traffic Analytics                                | -                              | -                     | -                             | ✓                              | Cloud security service that provides a first line of defense against threats, wherever users access the internet—on or off the corporate network. |
|                   | Cisco Umbrella®  | -                              | -                     | -                             | ✓                              |   |

| Trend                     | Feature   | Legacy fixed access switches   |                       |                      | Catalyst 9300 and 9300X models | Benefits  |
|---------------------------|---|--------------------------------|-----------------------|----------------------|--------------------------------|---|
|                           |   | Catalyst 3560-X, 3750-X Series | Catalyst 3750G Series | Catalyst 3850 Series |                                |   |
| Simplicity and automation | x86 CPU   | -                              | -                     | -                    | ✓                              | Faster CPU performance  |
|                           | Cisco IOS XE OS   | -                              | -                     | ✓                    | ✓                              | Single common network OS across switching, routing, wireless, and IoT   |
|                           | Simplified Campus Automation                              | -                              | -                     | -                    | ✓                              | Optimized discovery and configuration of network devices                |
|                           | KVM <sup>3</sup> and container-based hosting environments | -                              | -                     | -                    | ✓                              | Application hosting in the network, including Docker containers         |
|                           | Guest Shell   | -                              | -                     | ✓                    | ✓                              | On-box Python scripting   |
|                           | Model-driven programmability                              | -                              | -                     | ✓                    | ✓                              | Standards-based programmable interfaces                                 |
|                           | Streaming telemetry                                       | -                              | -                     | ✓                    | ✓                              | Rich contextual insights  |
|                           | Fabric-in-a-box   | -                              | -                     | -                    | ✓                              | Enable SD-Access without needing a separate device for each fabric role |



| Trend | Feature                                | Legacy fixed access switches   |                       |                       | Catalyst 9300 and 9300X models | Benefits   |
|-------|--|--------------------------------|-----------------------|-----------------------|--------------------------------|--|
|       |  | Catalyst 3560-X, 3750-X Series | Catalyst 3750G Series | Catalyst 3850 Series  |                                |  |
|       | SD-Access programmability              | -                              | -                     | Optional subscription | ✓                              |  |
|       | Cisco ThousandEyes Enterprise Agents   | -                              | -                     | -                     | ✓                              | Visibility from network to cloud for rapid problem isolation         |
|       | Cisco Spaces                           | -                              | -                     | -                     | ✓                              | Visibility of wired and wireless network devices for smart buildings |
|       | Meraki cloud management and monitoring | -                              | -                     | -                     | ✓                              | Management and visibility on Meraki Dashboard                        |

| Trend                                     | Feature   | Legacy fixed access switches   |                       |                      | Catalyst 9300 and 9300X models | Benefits  |
|---|---|--------------------------------|-----------------------|----------------------|--------------------------------|---|
|   |   | Catalyst 3560-X, 3750-X Series | Catalyst 3750G Series | Catalyst 3850 Series |                                |   |
| Bring Your Own Device (BYOD) and mobility | Wi-Fi 6E/6 and Wave 2 APs                                 | -                              | -                     | 24                   | 48                             | Highest density of nextgeneration access points in a 1RU <sup>4</sup> box       |
|   | Maximum number of APs supported                           | -                              | -                     | 100                  | 200                            |   |
|   | UADP ASIC <sup>5</sup> for wired and wireless convergence | -                              | -                     | UADP 1.0             | UADP 2.0<br>UADP 2.5sec        | Enable converged wired and wireless access for operational simplicity and scale |
|   | Application visibility across wired and wireless          | -                              | -                     | ✓                    | ✓                              |   |
|   | End-to-end quality of experience <sup>6</sup>             | -                              | -                     | -                    | ✓                              |   |

<sup>1</sup>G: Gigabit Ethernet | <sup>2</sup>SGT: Security Group Tag | <sup>3</sup>Kernel-based virtual machine <sup>4</sup>1RU: 1 rack unit  
<sup>5</sup>UADP ASIC: Unified Access Data Plane application-specific integrated circuit | <sup>6</sup>Cisco Catalyst Assurance

Table 4. Benefits of the Catalyst 9300L models compared to Catalyst 3650 Series access switches

| Trend                 | Feature                                       | Catalyst 3650 Series                                   | Catalyst 9300L Models                | Benefits  |
|-----------------------|---|--|--------------------------------------|---|
| Scale and performance | Bandwidth per stack                           | 160 Gbps   | 320 Gbps                             |   |
|                       | Uplinks                                       | 4x 1G<br>2x 10G<br>4x 10G<br>8x 10G<br>2x 40G<br>Fixed | 4x 1G,<br>4x 10G,<br>2x 40G<br>fixed |   |
|                       | Patching                                      | -  | Hot patching                         |   |
| Advanced security     | Native Flexible NetFlow                       | ✓  | ✓                                    | Orchestrate role-based access to corporate resources                  |
|                       | Cisco TrustSec and SGT for wired and wireless | ✓  | ✓                                    | AES-256, MACsec-256<br>Most secure link authentication and encryption |
|                       | Trustworthy solutions                         | ✓  | ✓                                    |   |
|                       | Native MACsec-256 encryption                  | -  | ✓                                    |   |
|                       | Encrypted Traffic Analytics                   | -  | ✓                                    | Detect malware hiding in encrypted traffic without decrypting it      |

| Trend                     | Feature                                      | Catalyst 3650 Series | Catalyst 9300L Models | Benefits  |
|---------------------------|--|----------------------|-----------------------|---|
| Simplicity and automation | x86 CPU                                      | -                    | ✓                     | Accelerate innovation   |
|                           | Cisco IOS XE OS                              | ✓                    | ✓                     | Single common network OS across switching, routing, wireless, and IoT |
|                           | Simplified Campus Automation                 | -                    | ✓                     | Optimized discovery and configuration of network devices              |
|                           | KVM and container-based hosting environments | -                    | ✓                     | Application hosting in the network                                    |
|                           | Guest Shell                                  | -                    | ✓                     | On-box Python scripting   |
|                           | Model-driven programmability                 | -                    | ✓                     | Standards-based programmable interfaces                               |
|                           | Streaming telemetry                          | -                    | ✓                     | Rich contextual insights  |
|                           | SD-Access programmability                    | -                    | ✓                     | Fabric-in-a-box deployment  |
|                           | Cisco ThousandEyes Enterprise Agents         | -                    | ✓                     | Visibility from network to cloud for rapid problem isolation          |
|                           | Wi-Fi 6E/6 and Wave 2 APs                    | 12                   | 12                    |   |
|                           | Maximum number of APs supported              | 25                   | 50                    |   |

| Trend | Feature  | Catalyst 3650 Series | Catalyst 9300L Models | Benefits  |
|-------|--|----------------------|-----------------------|---|
|       | UADP ASIC for wired and wireless convergence     | UADP 1.0             | UADP 2.0              | Enable converged wired and wireless access for operational simplicity and scale |
|       | Application visibility across wired and wireless | ✓                    | ✓                     |   |
|       | End-to-end quality of experience                 | -                    | ✓                     |   |
|       | Cloud monitoring for Catalyst                    | -                    | ✓                     | Visibility on Meraki Dashboard  |

### Why upgrade to the Catalyst 9400 Series?

The Catalyst 9400 Series modular access and distribution switches are designed to help you flexibly bridge your network to your business and your business to your customers. The first purpose-built platforms designed for full fabric control with Cisco Catalyst Center and SD-Access support a large selection of copper, multigigabit, 90W Cisco UPOE+ and 60W Cisco UPOE, and fiber line cards for flexible and scalable access and backbone deployments. With higher-performance supervisor engines, resilient power supplies, and enhanced scale, the Catalyst 9400 Series extends Cisco’s networking leadership with significant innovations in security, mobility, IoT, and cloud.



Figure 3. Catalyst 9400 Series

Table 5. Benefits of the Catalyst 9400 Series compared to other Catalyst modular access switches in their class

| Trend                             | Feature              | Legacy modular access switches |                      | Catalyst 9400 Series | Benefits  |
|-----------------------------------|----------------------|--------------------------------|----------------------|----------------------|---|
|                                   |                      | Catalyst 4500 Series           | Catalyst 6500 Series |                      |   |
| Scale and performance versatility | Chassis bandwidth    | 960 Gbps                       | 2 Tbps               | 9.6 Tbps             | Better mix and variety of higher speeds with longevity of future upgrades without replacing switch. |
|                                   | Throughput           | 250 Mpps                       | 450 Mpps             | 900 Mpps             |   |
|                                   | mGig and Cisco UPOE  | Either mGig or Cisco UPOE      | -                    | ✓                    | Up to 90W PoE with 48HX, 48HN, 48H models   |
|                                   | mGig and Cisco UPOE+ | -                              | -                    |                      |   |
|                                   | 100G/40G uplinks     | -                              | -                    | ✓                    | With SUP-2/2XL  |
|                                   | 10G/5G/2.5G/1G       | -                              | -                    | ✓                    |   |

| Trend         | Feature                               | Legacy modular access switches |                      | Catalyst 9400 Series | Benefits  |
|---------------|---------------------------------------|--------------------------------|----------------------|----------------------|---|
|               |                                       | Catalyst 4500 Series           | Catalyst 6500 Series |                      |   |
| Functionality | Simplified Campus Automation          | -                              | -                    | ✓                    | Optimized discovery and configuration of network devices  |
|               | SD-Access programmability             | Limited                        | -                    | ✓                    | Next-generation overlay support for segmentation and policy-based management with integrated threat detection and mitigation.   |
|               | Cisco Spaces IoT Gateway <sup>1</sup> | -                              | -                    | ✓                    | Advanced Layer 2 + Layer 3 functionality for aggregation and border nodes with open programmable interfaces. Gain visibility outside of your campus perimeter with native hosted ThousandEyes Enterprise Agents |
|               | ThousandEyes Enterprise Agents        | -                              | -                    | ✓                    |   |
|               | MPLS-VPN                              | -                              | ✓                    | ✓                    |   |
|               | Programmability                       | Limited                        | -                    | ✓                    |   |
|               | Application hosting/containers        | -                              | -                    | ✓                    |   |

| Trend             | Feature                          | Legacy modular access switches |                      | Catalyst 9400 Series | Benefits  |
|-------------------|----------------------------------|--------------------------------|----------------------|----------------------|---|
|                   |                                  | Catalyst 4500 Series           | Catalyst 6500 Series |                      |   |
| High availability | Cisco StackWise® Virtual         | VSS                            | VSS                  | ✓                    | Higher reliability by way of link, component, and switch redundancy. Better manageability via hitless software upgrades |
|                   | ISSU <sup>2</sup>                | ✓                              | eFSU                 | ✓                    |   |
|                   | GIR and NSF <sup>3</sup>         | -                              | -                    | ✓                    |   |
|                   | Hot patching                     | -                              | -                    | ✓                    |   |
| Security          | MACsec 256-bit encryption        | -                              | ✓                    | ✓                    | Orchestrate rolebased access to corporate resources   |
|                   | Cisco TrustSec endpoint security | -                              | -                    | ✓                    | AES-256, MACsec-256   |
|                   | Trustworthy solutions            | -                              | -                    | ✓                    | Most secure link authentication and encryption  |
|                   | Encrypted Traffic Analytics      | -                              | -                    | ✓                    |   |
|                   | Cisco Umbrella                   | -                              | -                    | ✓                    |   |

<sup>1</sup>Cisco Spaces IoT Gateway is part of the Cisco Catalyst Advantage licenses and includes Cisco Spaces Extend functionality

<sup>2</sup>Hardware ready. | <sup>3</sup>ISSU: In-Service Software Upgrade. | <sup>4</sup>GIR: Graceful Insertion and Removal; NSF: Nonstop Forwarding.



## Why upgrade to the Catalyst 9500 Series?

Cisco Catalyst 9500 Series switches are Cisco’s lead fixed enterprise core and aggregation switching platform and, as part of the Catalyst 9000 family, are built to transform your network to handle a hybrid world where the workplace is anywhere, endpoints could be anything, and applications are hosted all over the place.

The new Catalyst 9500X model is based on Cisco Silicon One Q200 Application-Specific Integrated Circuit (ASIC), which is purpose built for the next generation core with a programmable pipeline (P4). It is the first network silicon to offer switching capacity up to 25.6 Tbps (12.8 Tbps full-duplex) in the enterprise. The Q200 ASIC offers high-performance along with full routing and switching capabilities without external memories.

This is enabled by a multiple slice (discreet processing pipeline) internal architecture that includes an on-chip 2.5D High Bandwidth Memory (HBM). The Catalyst 9500 Series leverages a high-performance multiple core x86 CPU, and is Cisco’s leading purpose-built fixed core and WAN edge services enterprise switching platform, built for security, IoT, and cloud.



Figure 4. Catalyst 9500 Series

Table 6. Benefits of the Catalyst 9500 Series compared to other Catalyst fixed core switches in their class

| Trend                 | Feature                      | Legacy fixed core switches     |                            | Catalyst 9500 Series | Benefits                                    |
|-----------------------|------------------------------|--------------------------------|----------------------------|----------------------|---|
|                       |                              | Catalyst 4500-X Series (32x10) | Catalyst 3850 Fiber Series |                      |   |
| Scale and performance | Chassis bandwidth            | 800 Gbps                       | 480 Gbps                   | Up to 25.6 Tbps      | Supports 400G, 100G, 50G, 40G, 25G, and 10G |
|                       | 400G                         | -                              | -                          | ✓                    |   |
|                       | 10G, 25G, 40G, 50G, and 100G | 10G, 25G, 40G only             | 10G, 25G, 40G only         | ✓                    |   |
|                       | Max 10G density              | 40 ports                       | 48 ports                   | 60 ports             |   |
|                       | Max 25G/50G density          | -                              | -                          | 60 ports             |   |
|                       | Max 100G density             | -                              | -                          | 32 ports             |   |

| Trend             | Feature                                       | Legacy fixed core switches     |                            | Catalyst 9500 Series | Benefits   |
|-------------------|---|--------------------------------|----------------------------|----------------------|--|
|                   |   | Catalyst 4500-X Series (32x10) | Catalyst 3850 Fiber Series |                      |  |
| Advanced security | Native Flexible NetFlow                       | -                              | ✓                          | ✓                    | Orchestrate rolebased access to corporate resources                                  |
|                   | Cisco TrustSec and SGT for wired and wireless | Wired only                     | ✓                          | ✓                    | AES-256, MACsec-256  |
|                   | Trustworthy solutions                         | -                              | -                          | ✓                    | Most secure link authentication and encryption                                       |
|                   | Native MACsec-256 encryption                  | -                              | mGig and 10G models        | ✓                    | Uncompromised user experience: Assess, monitor, and troubleshoot network proactively |
|                   | Encrypted Traffic Analytics                   | -                              | -                          | ✓                    |  |

| Trend             | Feature  | Legacy fixed core switches     |                            | Catalyst 9500 Series | Benefits  |
|-------------------|--|--------------------------------|----------------------------|----------------------|---|
|                   |  | Catalyst 4500-X Series (32x10) | Catalyst 3850 Fiber Series |                      |   |
| BYOD and mobility | Fabric-enabled wireless                          | -                              | ✓                          | ✓                    | Enable converged wired and wireless access for operational simplicity and scale |
|                   | Common wired and wireless features               | -                              | ✓                          | ✓                    |   |
|                   | UADP ASIC for wired and wireless convergence     | -                              | ✓                          | ✓                    |   |
|                   | Application visibility across wired and wireless | -                              | ✓                          | ✓                    |   |
|                   | Hierarchical wireless QoS <sup>1</sup>           | -                              | ✓                          | ✓                    |   |

| Trend                     | Feature   | Legacy fixed core switches     |                            | Catalyst 9500 Series | Benefits   |
|---------------------------|---|--------------------------------|----------------------------|----------------------|--|
|                           |   | Catalyst 4500-X Series (32x10) | Catalyst 3850 Fiber Series |                      |  |
| Simplicity and automation | Simplified Campus Automation                        | -                              | -                          | ✓                    | Optimized discovery and configuration of network devices |
|                           | Common features for wired and wireless              | -                              | ✓                          | ✓                    | Simplicity and business agility                          |
|                           | GIR and patching                                    | -                              | -                          | ✓                    |  |
|                           | Cisco Catalyst Center and SD-Access programmability | -                              | Optional subscription      | ✓                    |  |
|                           | Cloud monitoring for Catalyst                       | -                              | -                          | ✓                    | Visibility on Meraki Dashboard                           |

<sup>1</sup>QoS: Quality of service

## Why upgrade to the Catalyst 9600 Series?

The Catalyst 9600 Series further expands the end-to-end Catalyst 9000 family, aligning our comprehensive solution with our customers' varying business and network strategies. When you need the most secure, most resilient, and most intelligent network, you need Catalyst 9600 Series switches, the industry's first purpose-built modular-configuration multi-rate 400G/200G\*/100G dual-rate 100G/40G, multirate 50G\*/25G/10G/1G and high-density 10G multigigabit line of switches for enterprise-class core and aggregation layers.

The new Catalyst 9600 SUP-2 supervisor is based on Cisco Silicon One Q200 Application-Specific Integrated Circuit (ASIC), which is purpose built for the next generation core with a programmable pipeline (P4). It is

\* Hardware capable

the first network silicon to offer switching capacity up to 25.6 Tbps (12.8 Tbps full-duplex) in the enterprise. The Q200 ASIC offers high-performance along with full routing and switching capabilities without external memories. This is enabled by a multiple slice (discreet processing pipeline) internal architecture that includes an on-chip 2.5D High Bandwidth Memory (HBM). The Catalyst 9600 Series leverages a high-performance multiple core x86 CPU, and is Cisco's leading purpose-built modular core and WAN edge services enterprise switching platform, built for security, IoT, and cloud.



Figure 5. Catalyst 9600 Series

Table 7. Benefits of the Catalyst 9600 Series compared to other Catalyst modular core switches in their class

| Trend                             | Feature                         | Legacy modular core switches    |                           |              | Catalyst 9600 Series | Benefits   |
|-----------------------------------|---------------------------------|---------------------------------|---------------------------|--------------|----------------------|--|
|                                   |                                 | Catalyst 6500 Series Sup 720 3C | Catalyst 6500/6800 Series |              |                      |  |
|                                   |                                 |                                 | Sup 2T                    | Sup 6T       |                      |  |
| Scale and performance versatility | Chassis bandwidth               | 720 Gbps                        | Up to 2 Tbps              | Up to 6 Tbps | Up to 25.6 Tbps      | Better mix and variety of higher speeds with longevity of future upgrades without replacing switch |
|                                   | Throughput                      | 450 Mpps                        | 720 Mpps                  | 780 Mpps     | 8 Bpps               |  |
|                                   | 400G (QSFP-DD)<br>200G (QSFP56) | -                               | -                         | -            | ✓                    | Line-rate 25G, 40G, 50G 100G, 200G* and 400G   |
|                                   | 100G (QSFP28)<br>40G (QSFP+)    | -                               | 40G only                  | 40G only     | ✓                    |  |
|                                   | 50G (SFP56)<br>25G (SFP28)      | -                               | -                         | -            | ✓                    |  |

| Trend             | Feature                        | Legacy modular core switches    |                           |         | Catalyst 9600 Series | Benefits  |
|-------------------|--------------------------------|---------------------------------|---------------------------|---------|----------------------|---|
|                   |                                | Catalyst 6500 Series Sup 720 3C | Catalyst 6500/6800 Series |         |                      |   |
|                   |                                |                                 | Sup 2T                    | Sup 6T  |                      |   |
|                   | SD-Access                      | -                               | Limited                   | Limited | ✓                    | Next-generation overlay support for segmentation and policy-based management with integrated threat detection and mitigation. Advanced Layer 2 + Layer 3 functionality for aggregation and border nodes with open programmable interfaces |
|                   | MPLS-VPN                       | ✓                               | ✓                         | ✓       | ✓                    |   |
|                   | Simplified Campus Automation   | -                               | -                         | -       | ✓                    |   |
|                   | Programmability                | -                               | Limited                   | Limited | ✓                    |   |
|                   | Application hosting/containers | -                               | -                         | -       | ✓                    |   |
| High availability | Cisco StackWise Virtual        | -                               | ✓                         | ✓       | ✓                    |   |
|                   | ISSU                           | -                               | Limited                   | Limited | ✓                    |   |
|                   | GIR and NSF                    | -                               | -                         | -       | ✓                    |   |
|                   | Hot patching                   | -                               | -                         | -       | ✓                    |   |

| Trend    | Feature                          | Legacy modular core switches    |                           |         | Catalyst 9600 Series | Benefits  |
|----------|----------------------------------|---------------------------------|---------------------------|---------|----------------------|---|
|          |                                  | Catalyst 6500 Series Sup 720 3C | Catalyst 6500/6800 Series |         |                      |   |
|          |                                  |                                 | Sup 2T                    | Sup 6T  |                      |   |
| Security | MACsec-256 bit encryption        | -                               | ✓                         | ✓       | ✓                    | Enable converged wired and wireless access for operational simplicity and scale |
|          | MACsec-256 bit encryption        | 128 bit                         | 128 bit                   | 128 bit | ✓                    |   |
|          | Cisco TrustSec endpoint security | -                               | ✓                         | ✓       | ✓                    |   |
|          | Trustworthy solutions            | -                               | -                         | -       | ✓                    |   |

## Cisco Services

With Cisco Services, you can achieve infrastructure excellence faster with less risk. Our services for the Cisco Catalyst 9000 switching family provide expert guidance to help you successfully plan, deploy, manage, and support your new switches. With unmatched networking expertise, best practices, and innovative tools, Cisco Services can help you reduce overall upgrade, refresh, and migration costs as you introduce new hardware, software, and protocols into the network. With a comprehensive lifecycle of services, Cisco experts will help you minimize disruption and improve operational efficiency to extract maximum value from your Cisco Catalyst infrastructure. [Learn more.](#)



## Finance your switching migration with Cisco Capital

Let financing from Cisco Capital® make migrating your switches and accelerating your digital transformation even easier. Cisco Capital Easy Pay makes this transition as easy as possible with no upfront costs and predictable monthly payments. You pay 90% of the total over a 3-year period that is completely interest free. At the end of the term, you have the option to return and refresh the equipment, extend your lease, or purchase the solution at 10% of the original cost. Take advantage of this market-leading interest rate and use your budget for other investments.

Take advantage of [Cisco Capital Easy Pay](#)

## Improve your results with our services

No matter where you are in your journey, Cisco and our partners offer services expertise to help you accelerate your digital network transformation—from upgrade and optimization services to award-winning support. We help you speed your upgrade deployments, reduce risk and complexity, and provide business continuity as you refresh your network. To simplify and support your upgrade, Cisco offers services to streamline the process and help you get the most out of your investment. The upgrade service helps control costs, improve operational excellence, and mitigate risk during your refresh.

Learn more about all [services for switches](#).

## More reasons to upgrade

- Reduce cost, complexity, and downtime with Cisco SD-Access. Automate policy, enable fast service creation, and get 360-degree contextual insights across users, devices, and applications. Assure network performance with real-time and historical data analytics, to learn, adapt, and even detect problems before they happen.
- Create better customer and employee experiences through higher performance, improved support for mobility, and service assurance with embedded ThousandEyes network testing
- Deploy advanced end-to-end security designed to work together to detect and stop threats, simplify security complexity, keep your business more secure, and make your IT more productive

The Catalyst 9000 family is also the first in the line to offer the Cisco IOS XE and Cisco Catalyst subscription-based software licenses, allowing customers to purchase the features and capabilities they need. See the benefits you could be receiving now by comparing the Cisco Catalyst 9000 switches to older switches (see Tables 1 through 6).